

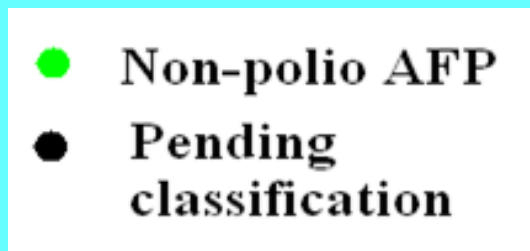
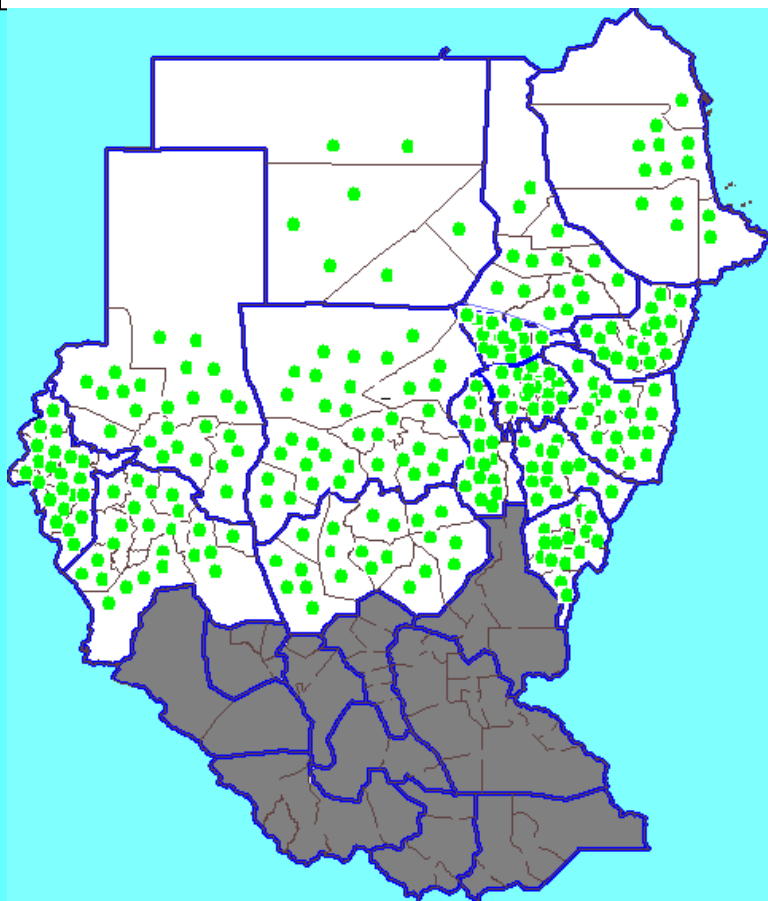
Sudan Weekly AFP Surveillance Report

Week 5

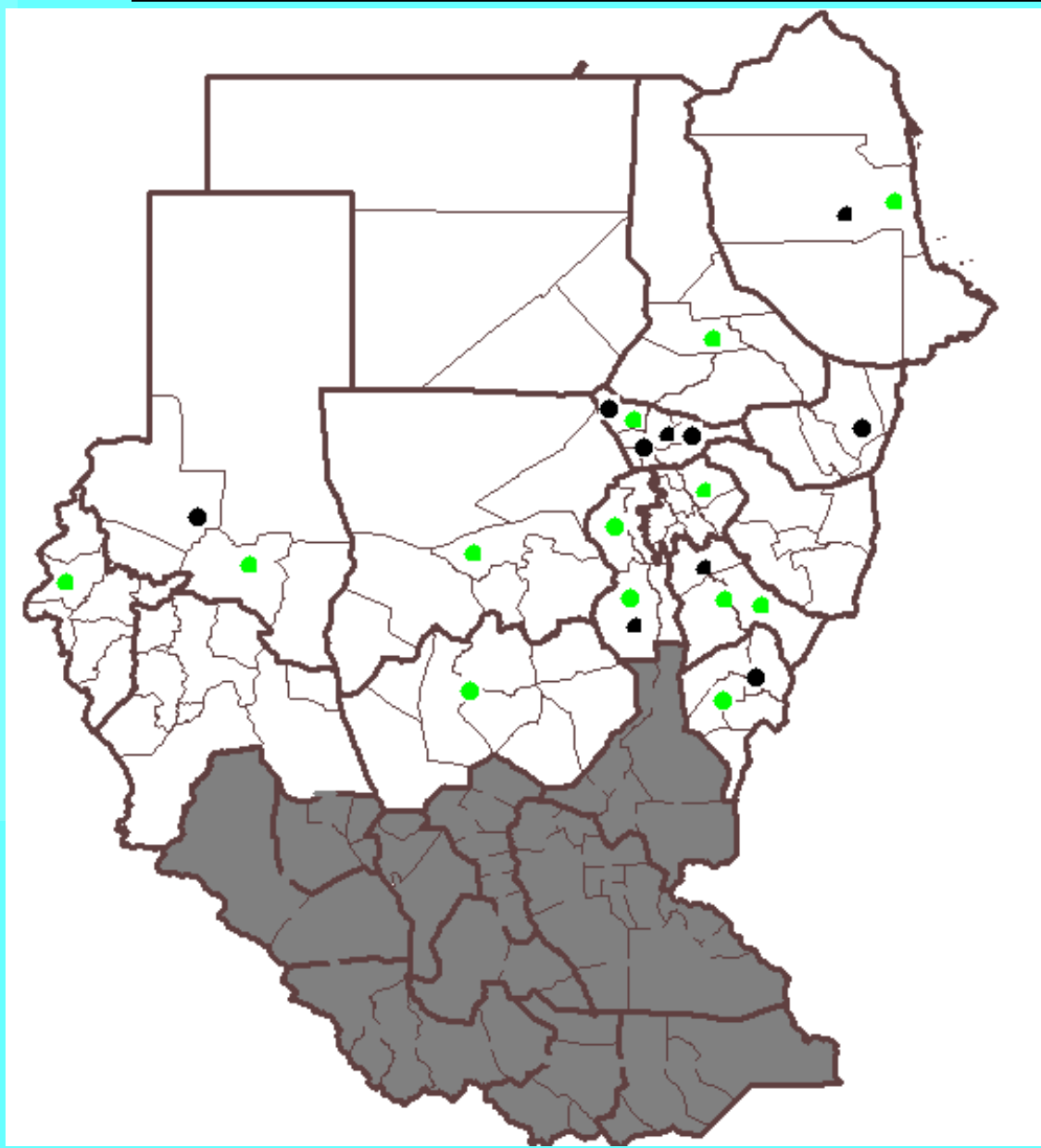
(Ending on 6 February 2011)

**National AFP
Surveillance system
Sudan**

Map 1. Distribution of AFP cases by classification, N Sudan, 2010

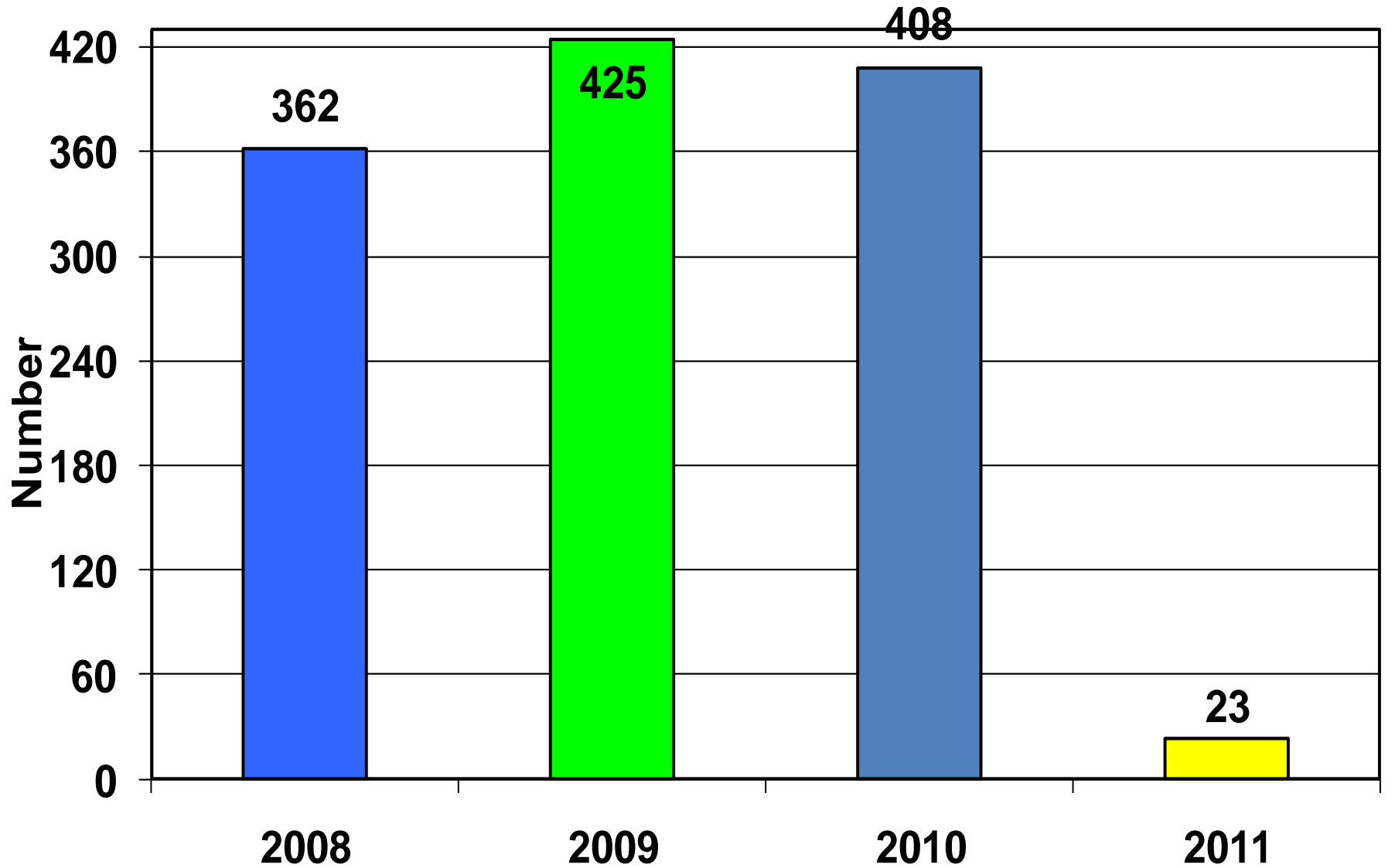


Map 2. Distribution of AFP cases by classification, N Sudan, 2011*



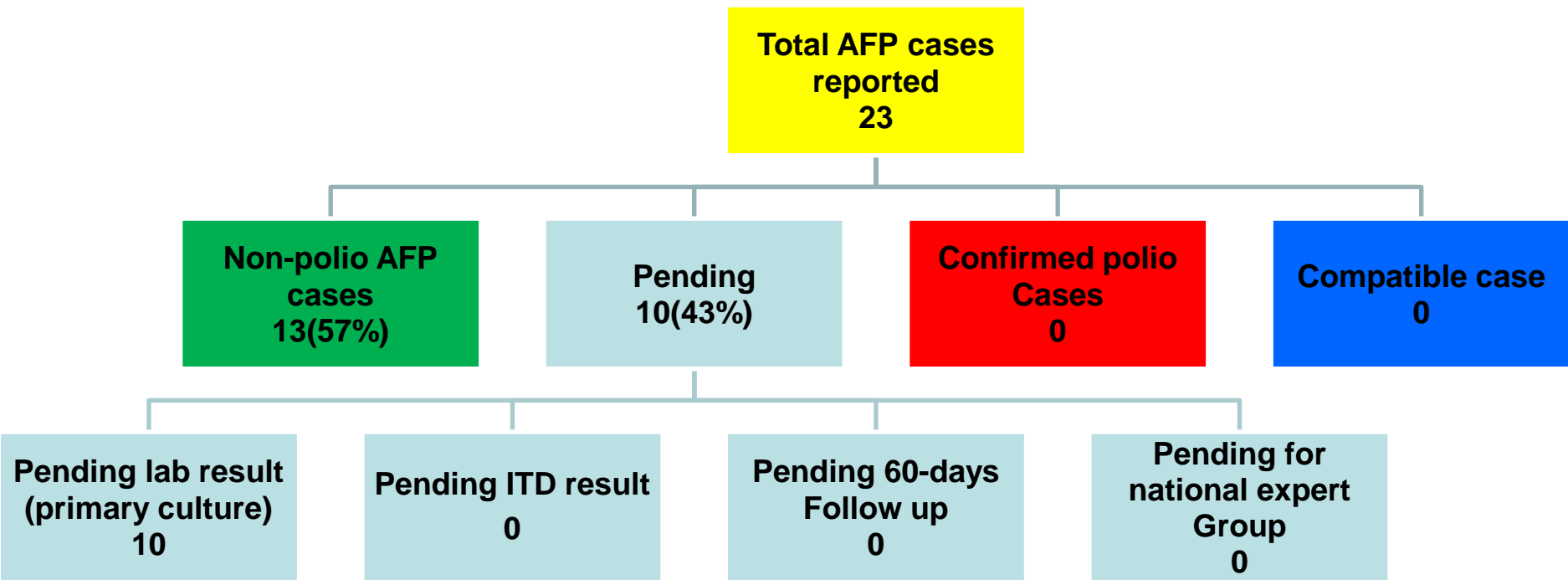
*** Up to 6/2/2011**

**Fig. 1: Total AFP cases, North Sudan
2008-2011***



* Up to 6/2/2011

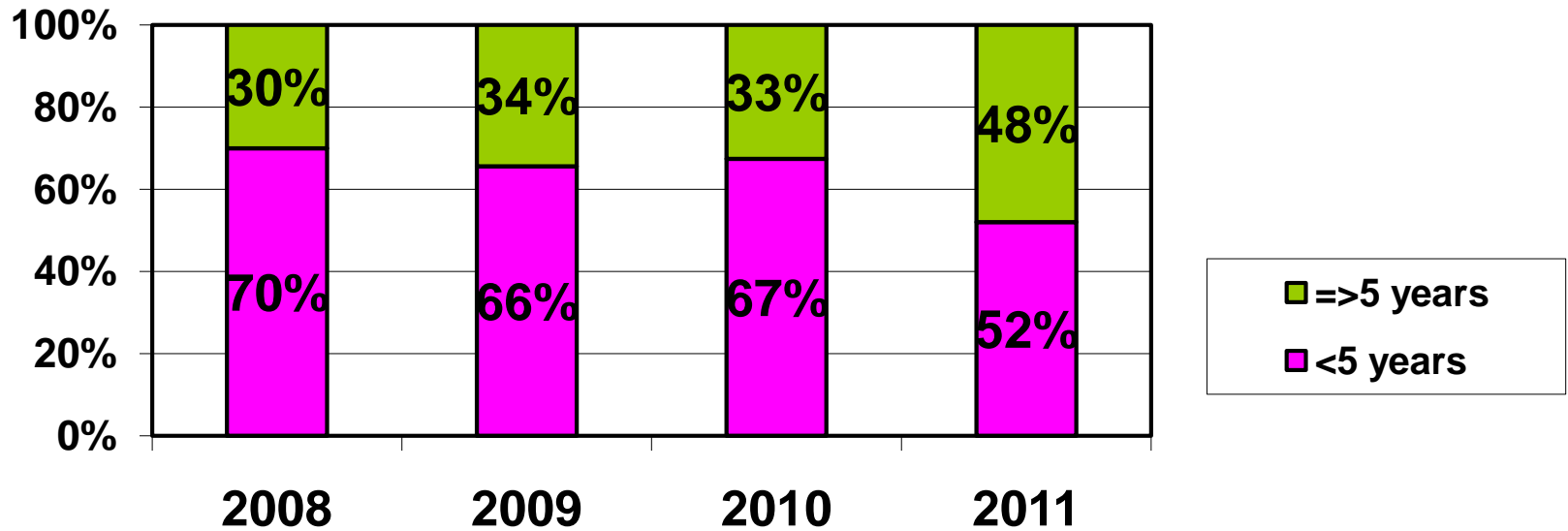
Fig. 2: Total AFP cases by classification, North Sudan, 2011*



The total 2010 AFP cases is 408 were discarded as non-polio AFP cases

*** Up to 6/2/2011**

Fig. 3: North SUDAN AFP cases by age group, 2008 – 2011*



*** Up to 6/2/2011**

Fig. 4: North SUDAN AFP cases by sex 2008 – 2011*

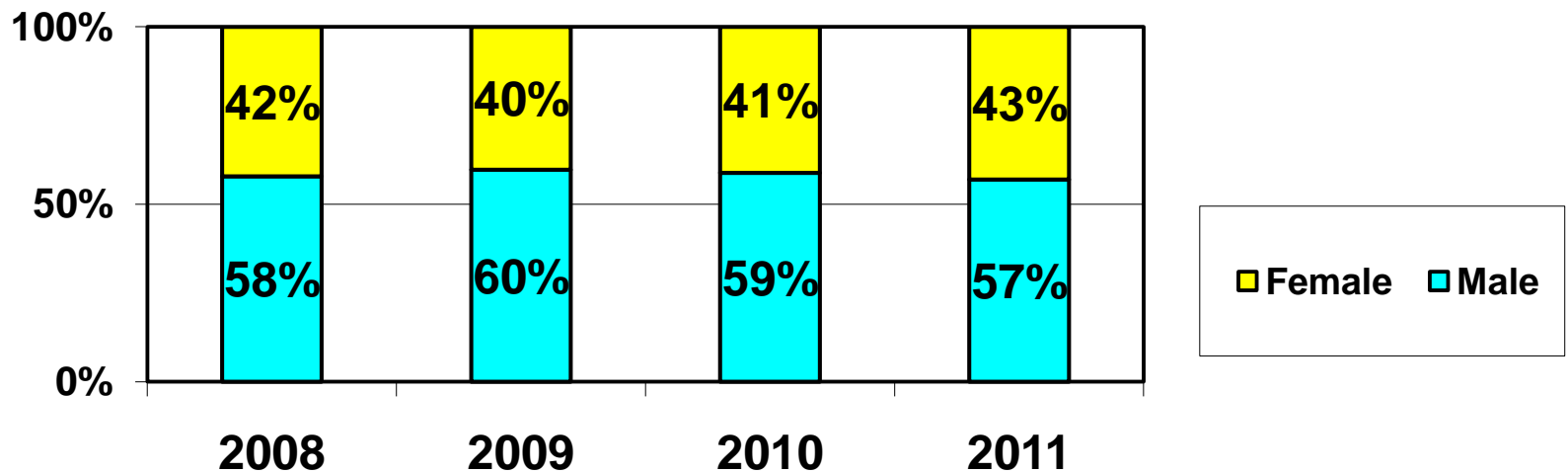


Fig. 5: Percent distribution of AFP cases by time of detection, North Sudan, 2010

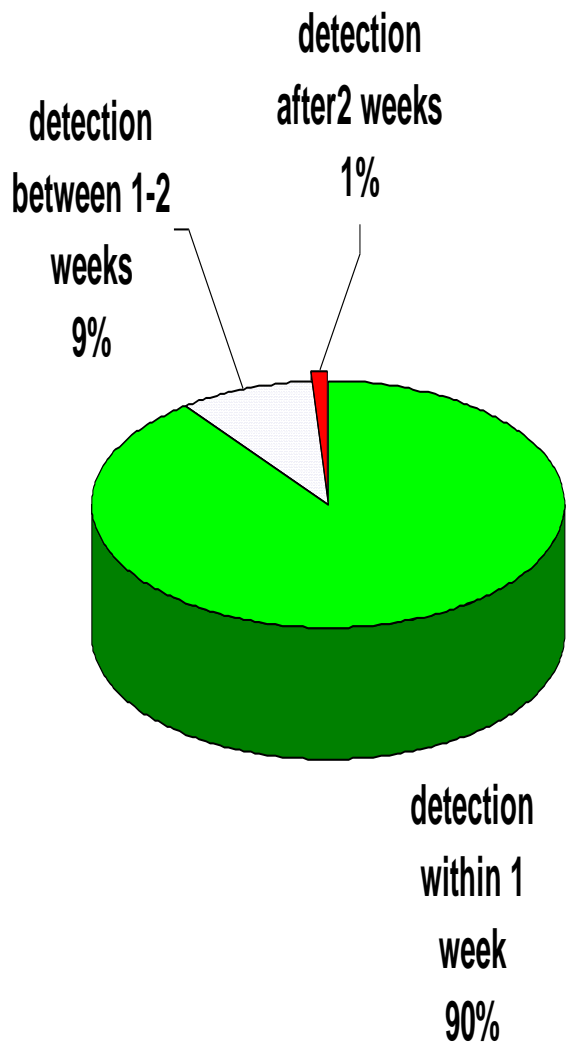
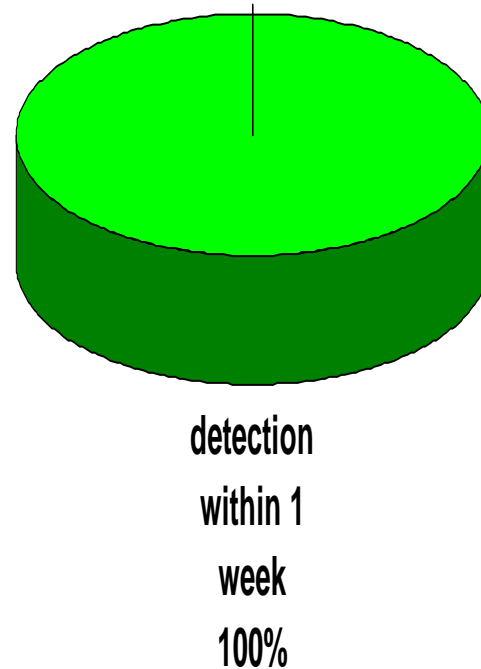


Fig. 6: Percent distribution of AFP cases by time of detection, North Sudan, 2011*

N = 23 AFP cases



*** Up to 6/2/2011**

Fig. 7: Percent distribution of AFP cases according to the timeliness of detection by states, Northern states, 2010

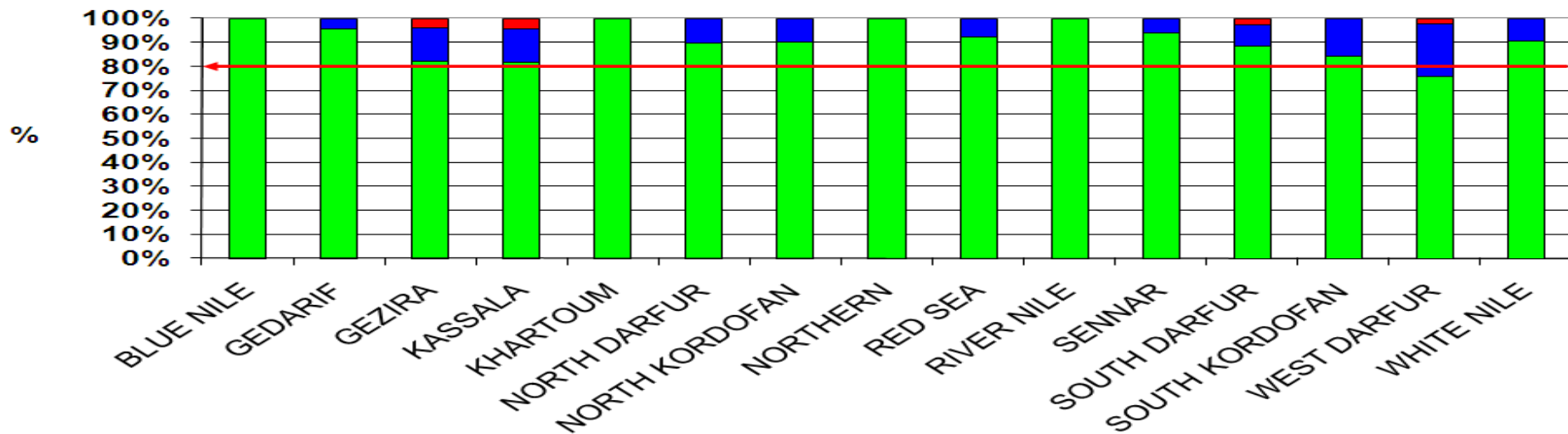
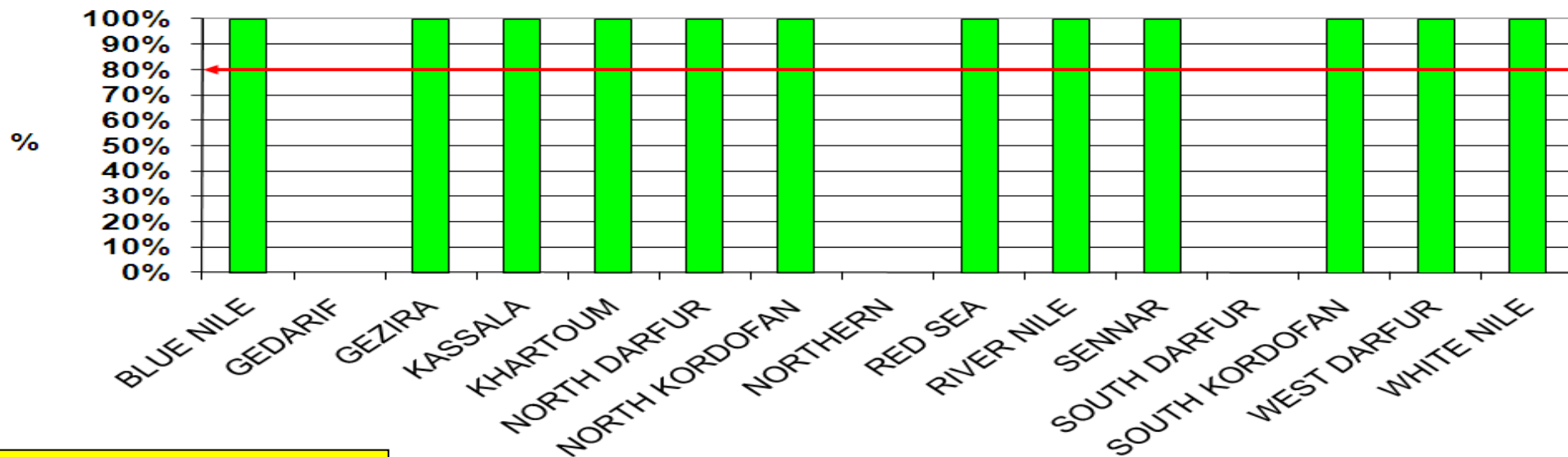


Fig. 8: Percent distribution of AFP cases according to the timeliness of detection by states, Northern states, 2011*



* Up to 6/2/2011

■ Early detection ■ Moderate detection ■ Late detection

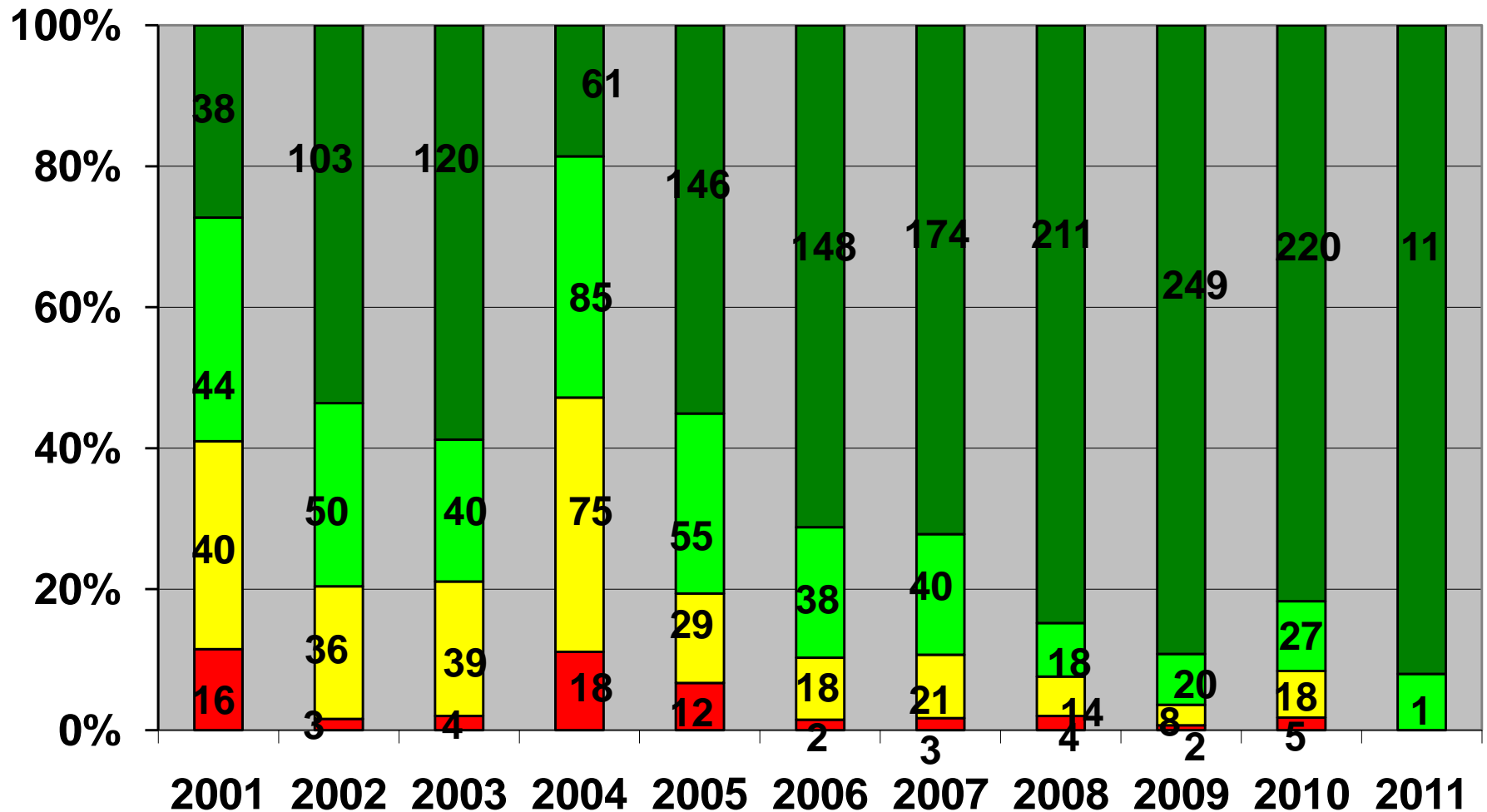
Table 1. Major AFP surveillance performance indicators, Northern States, 2010

State	U 15 yrs population	Total reported AFP cases	Non-polio AFP cases	Pending classification	Polio cases	Compatible cases	% Adequate stools	Annualized AFP rate	% NPEV
B. Nile	355,219	20	19	1	0	0	100%	5.6	5%
Gedarif	833,767	22	22	0	0	0	95%	2.6	14%
Gezira	1,868,934	50	50	0	0	0	96%	2.7	20%
Kasala	815,721	22	22	0	0	0	95%	2.7	5%
Khartom	2,316,035	49	48	1	0	0	100%	2.1	10%
N.Darf	836,608	29	28	1	0	0	100%	3.5	18%
N.Kord	1,243,363	40	39	1	0	0	98%	3.2	15%
Northern	263,099	7	7	0	0	0	100%	2.7	14%
Red Sea	329,031	13	13	0	0	0	92%	4.0	8%
River Nile	453,525	18	18	0	0	0	94%	4.0	6%
Sennar	699,734	16	16	0	0	0	88%	2.3	25%
S.Darfur	1,689,498	35	34	1	0	0	97%	2.1	24%
S. Kord	947,711	25	25	0	0	0	100%	2.6	28%
W.Darfur	927,169	41	40	1	0	0	98%	4.4	15%
W. Nile	814,450	21	21	0	0	0	100%	2.6	14%
Total	14,393,864	408	402	6	0	0	97%	2.8	15%

Table 2. Major AFP surveillance performance indicators, Northern States, up to 6/2/2011

State	U 15 yrs population	Total reported AFP cases	Non-polio AFP cases	Pending classification	Polio cases	Compatible cases	% Adequate stools	Annualized AFP rate	% NPEV
B. Nile	365,591	2	1	1	0	0	100%	5.7	0%
Gedarif	860,364	0	0	0	0	0	0%	0.0	0%
Gezira	1,921,077	1	1	0	0	0	0%	0.5	0%
Kasala	836,195	1	0	1	0	0	100%	1.2	0%
Khartom	2,401,033	5	1	4	0	0	100%	2.2	100%
N.Darf	863,045	2	1	1	0	0	100%	2.4	0%
N.Kord	1,262,262	1	1	0	0	0	100%	0.8	0%
Northern	267,256	0	0	0	0	0	0%	0.0	0%
Red Sea	330,018	2	1	1	0	0	100%	6.3	0%
River Nile	461,734	1	1	0	0	0	100%	2.3	0%
Sennar	717,437	3	2	1	0	0	100%	4.3	0%
S.Darfur	1,747,110	0	0	0	0	0	0%	0.0	0%
S. Kord	960,789	1	1	0	0	0	100%	1.1	0%
W.Darfur	949,143	1	1	0	0	0	100%	1.1	0%
W. Nile	834,567	3	2	1	0	0	100%	3.7	0%
Total	14,777,621	23	13	10	0	0	100%	1.6	8%

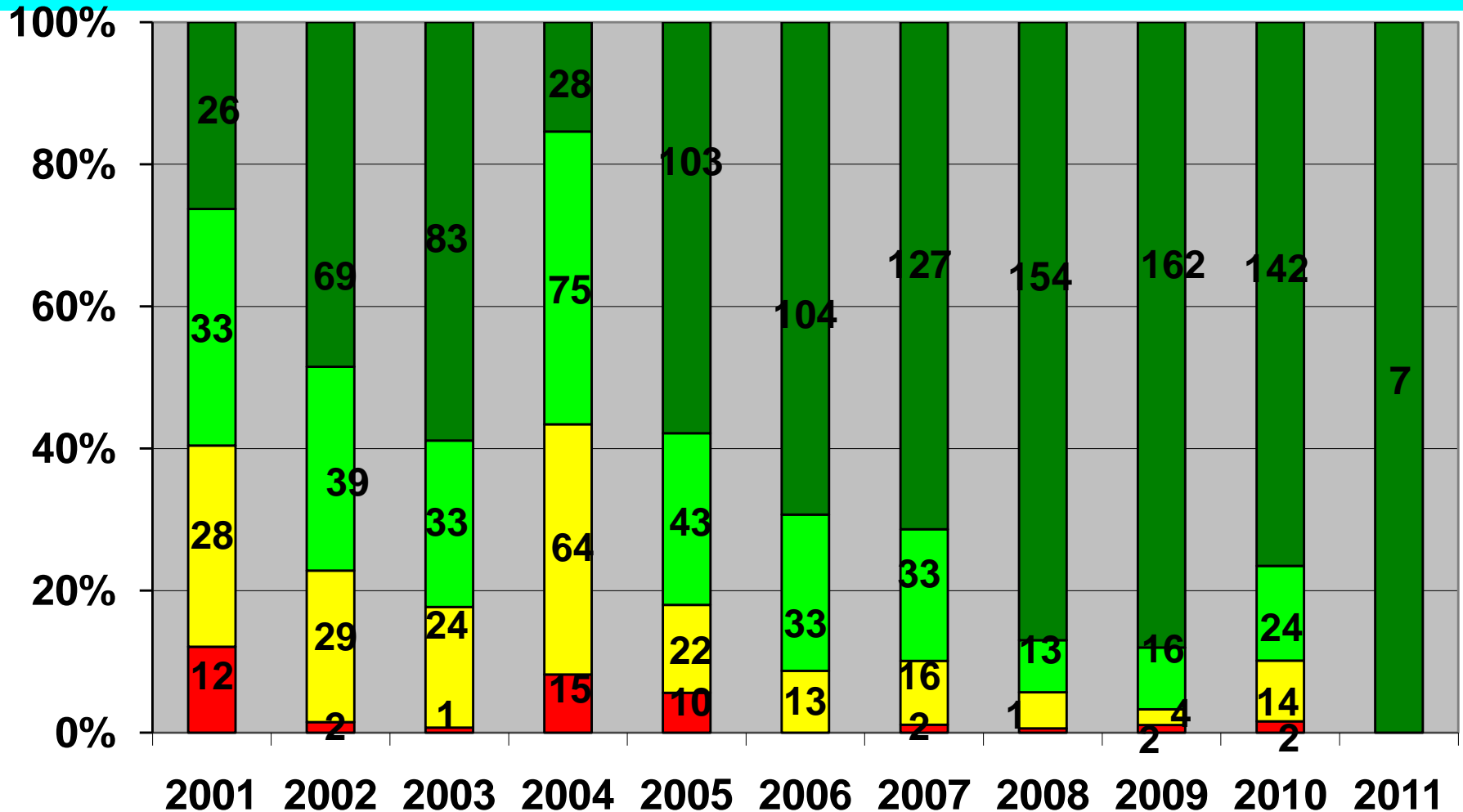
Fig. 8: Percent distribution of AFP cases < 60 months by number of OPV doses, North Sudan 2001-2011*



■ 0 OPV doses
 ■ '1-3 OPV doses
 ■ '4-6 OPV doses
 ■ 7+ OPV doses

* Up to 6/2/2011

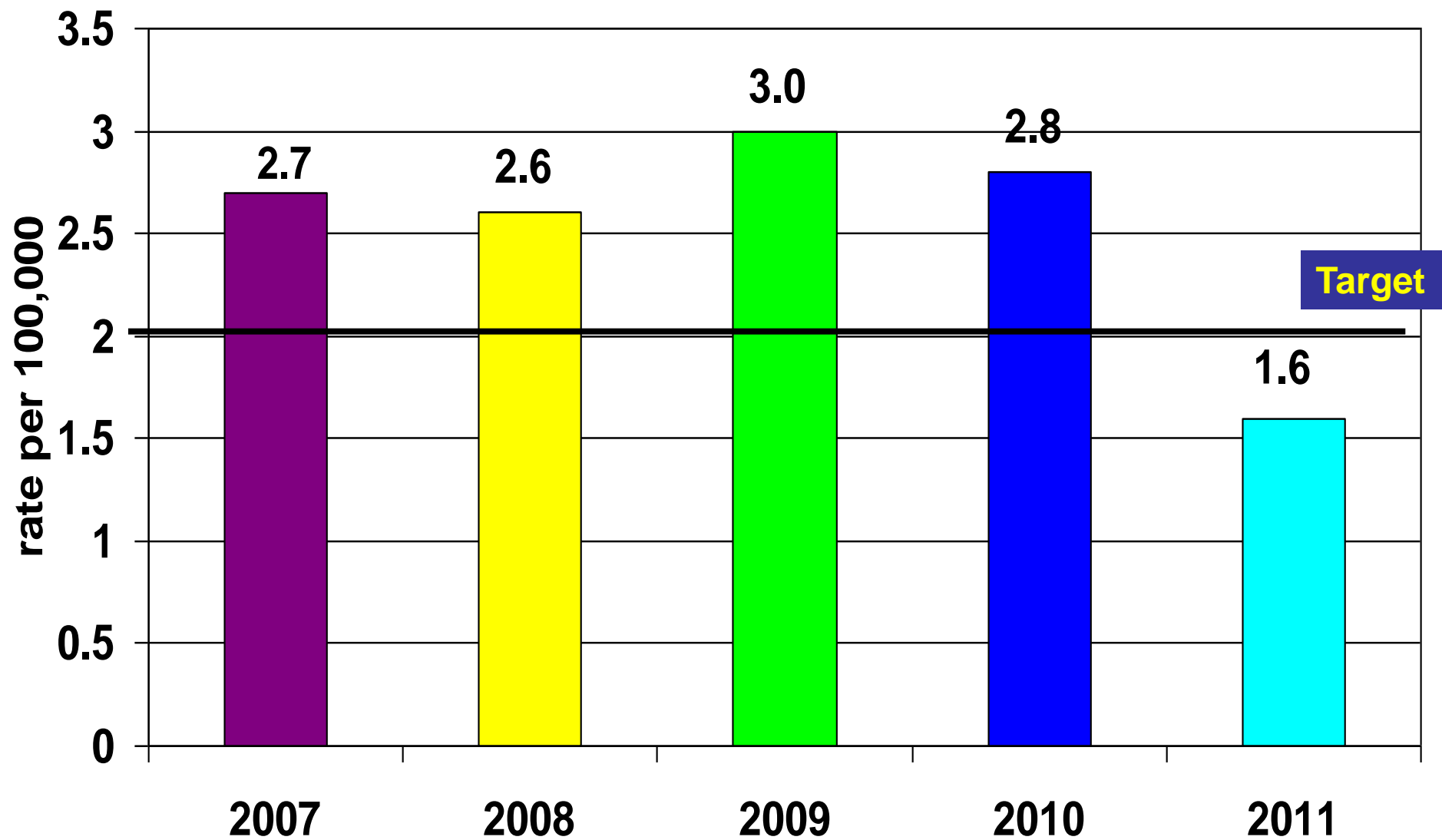
Fig. 9: No. & percent distribution of AFP cases 6-36 months by number of OPV doses, North Sudan 2001-2011*



■ 0 OPV doses
 ■ '1-3 OPV doses
 ■ '4-6 OPV doses
 ■ 7+ OPV doses

* Up to 6/2/2011

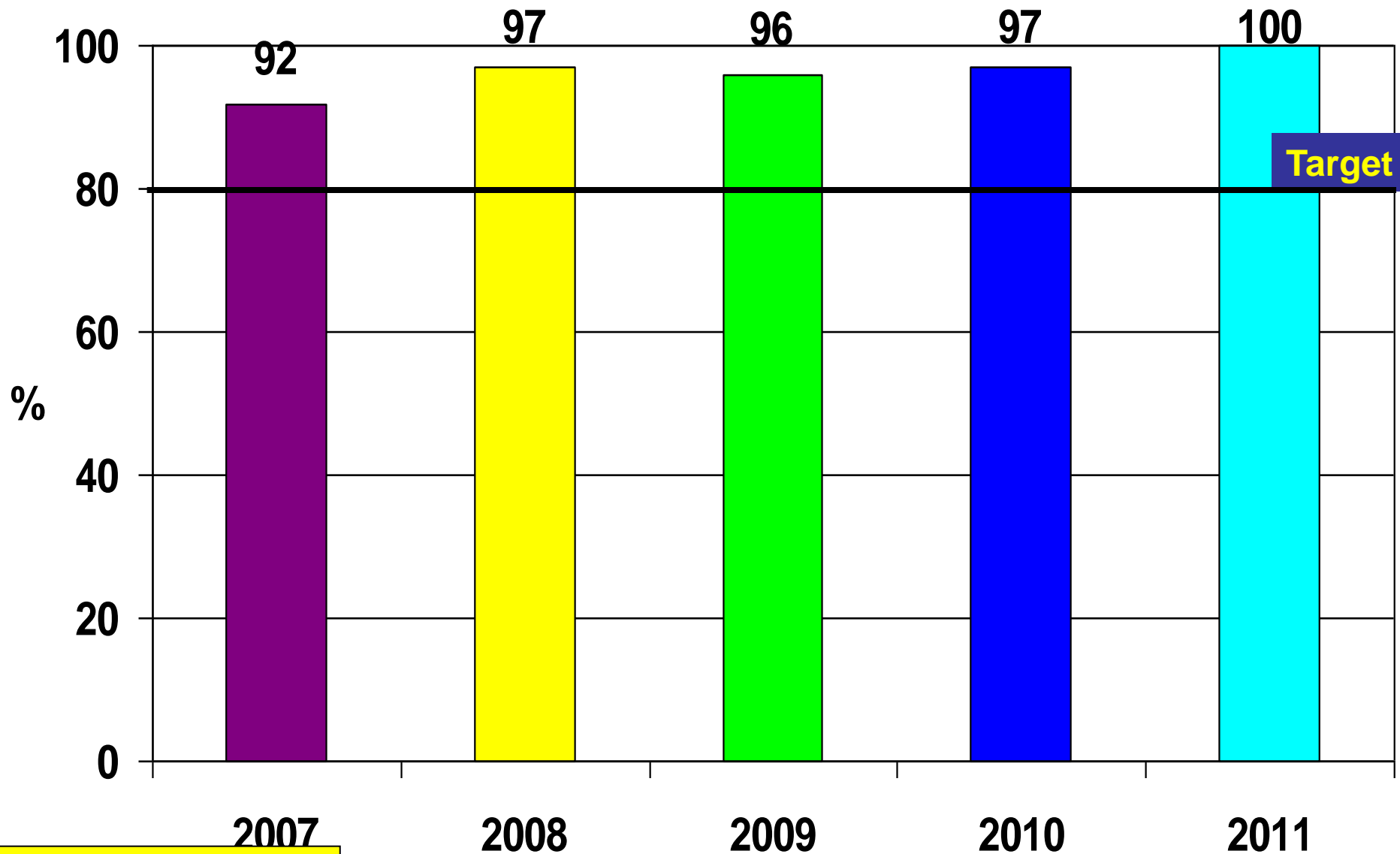
Fig. 10: Non-Polio AFP rate per 100,000 children under 15 years of age, North Sudan, 2007 – 2011*



* Up to 6/2/2011

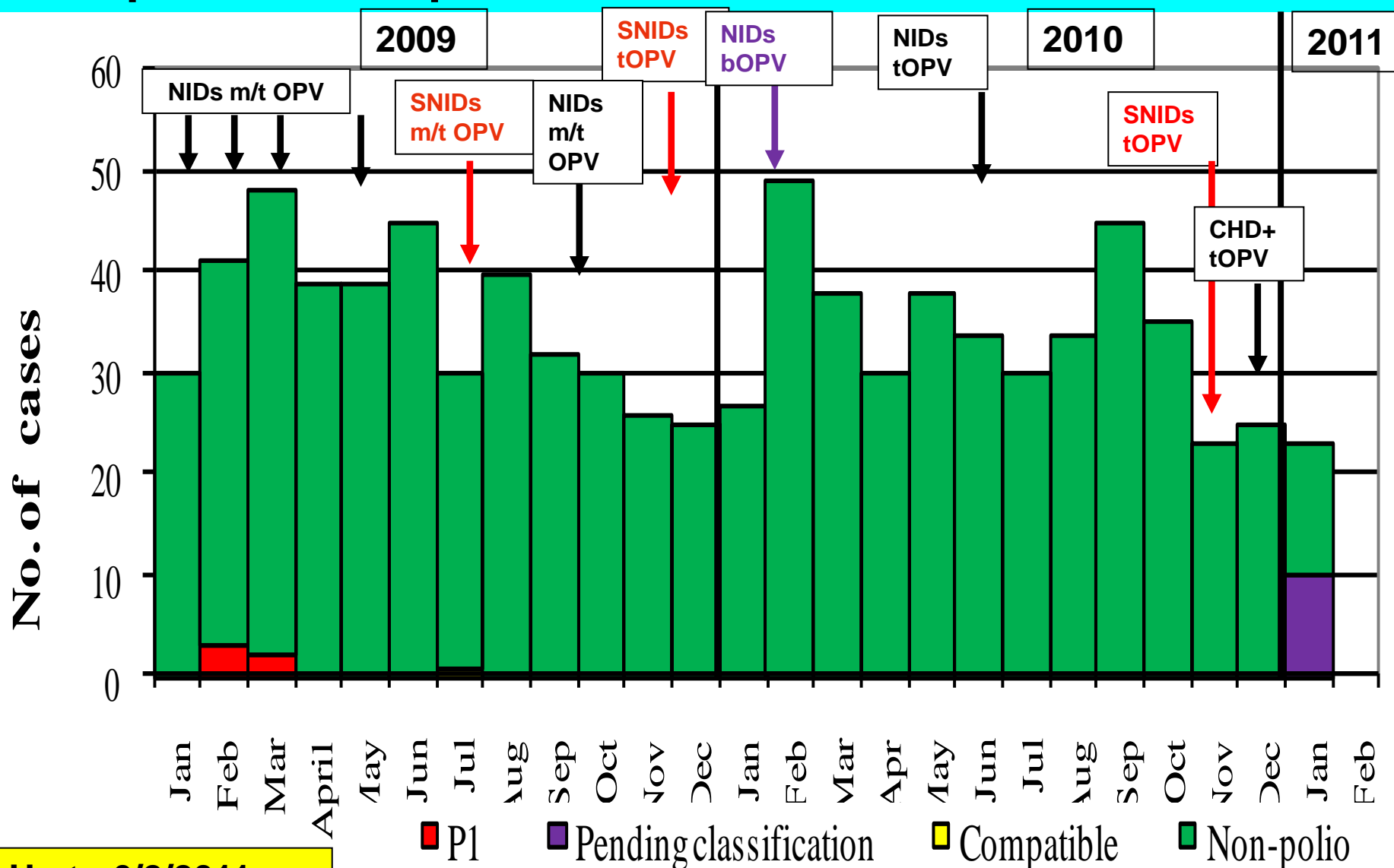
Fig. 11: Adequate stool collection rate

North Sudan, 2007 – 2011*



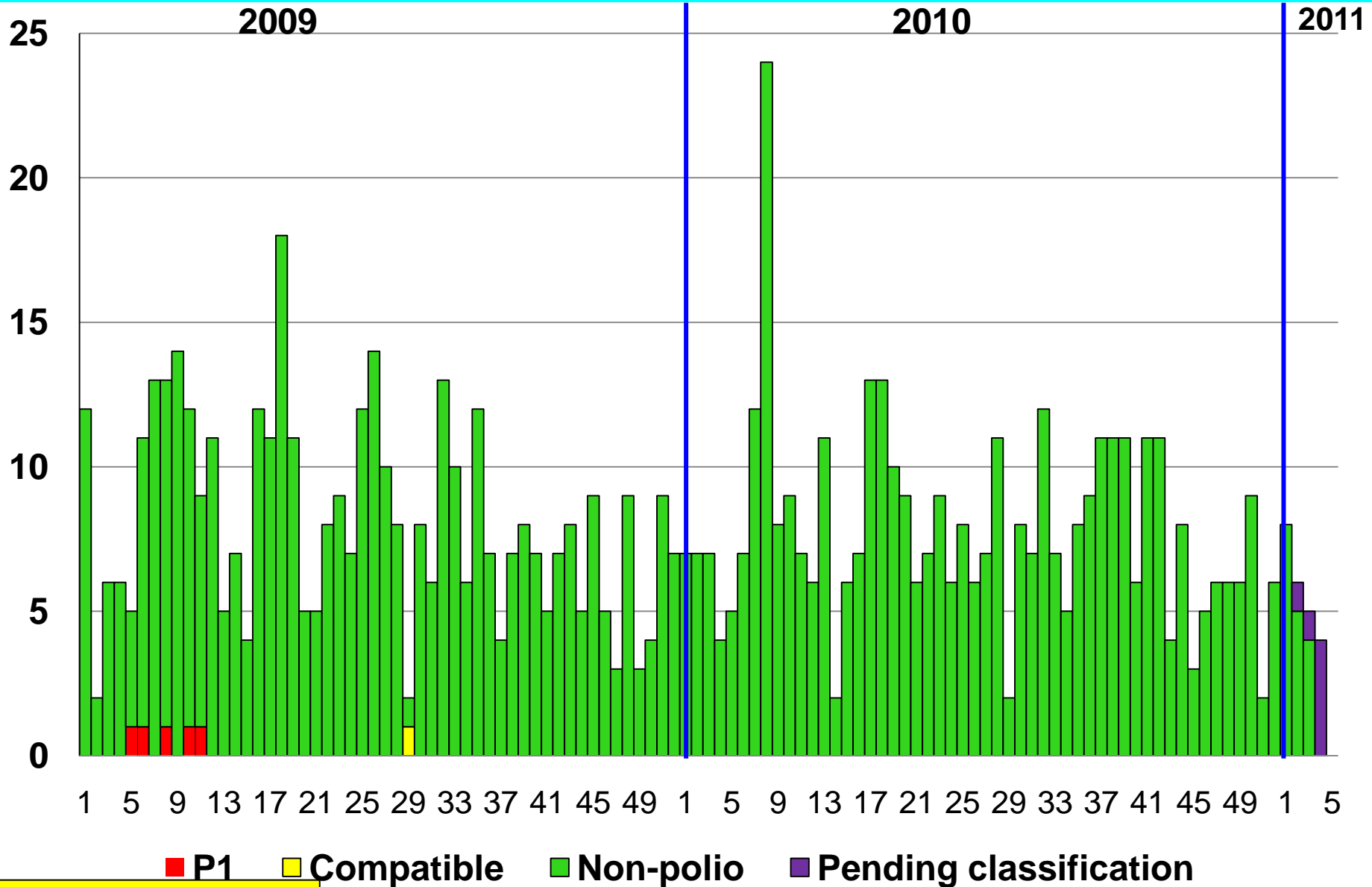
* Up to 6/2/2011

Fig. 12: Distribution of polio and non-polio AFP Cases by classification, month of onset & SIA response to the poliovirus importation in North Sudan 2008-2011*



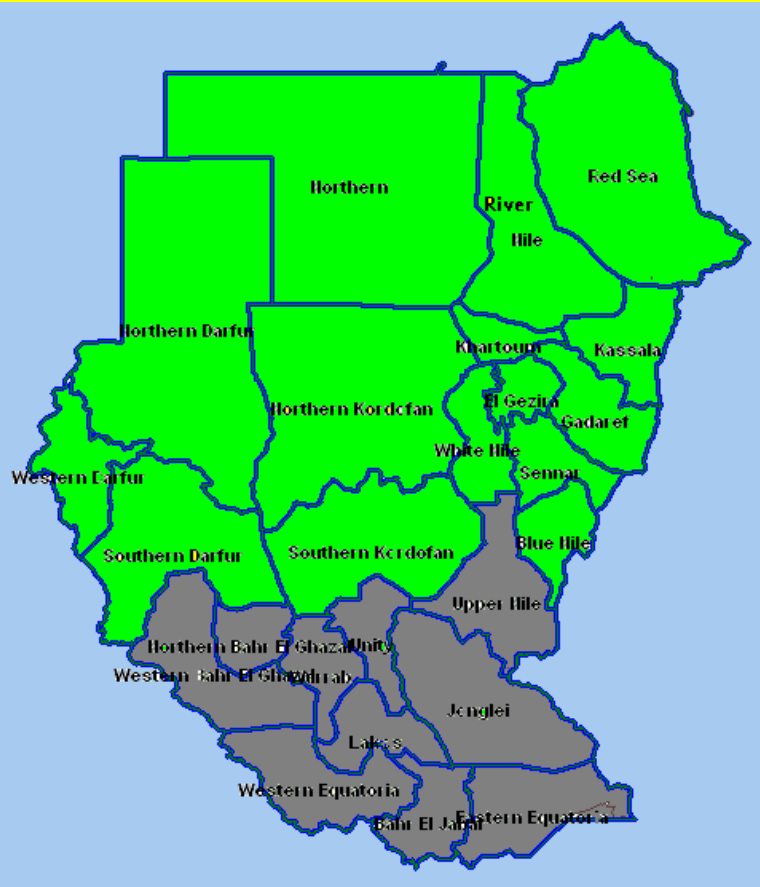
* Up to 6/2/2011

Fig. 13: Distribution of AFP cases by classification and week of onset, North Sudan 2008 – 2011*

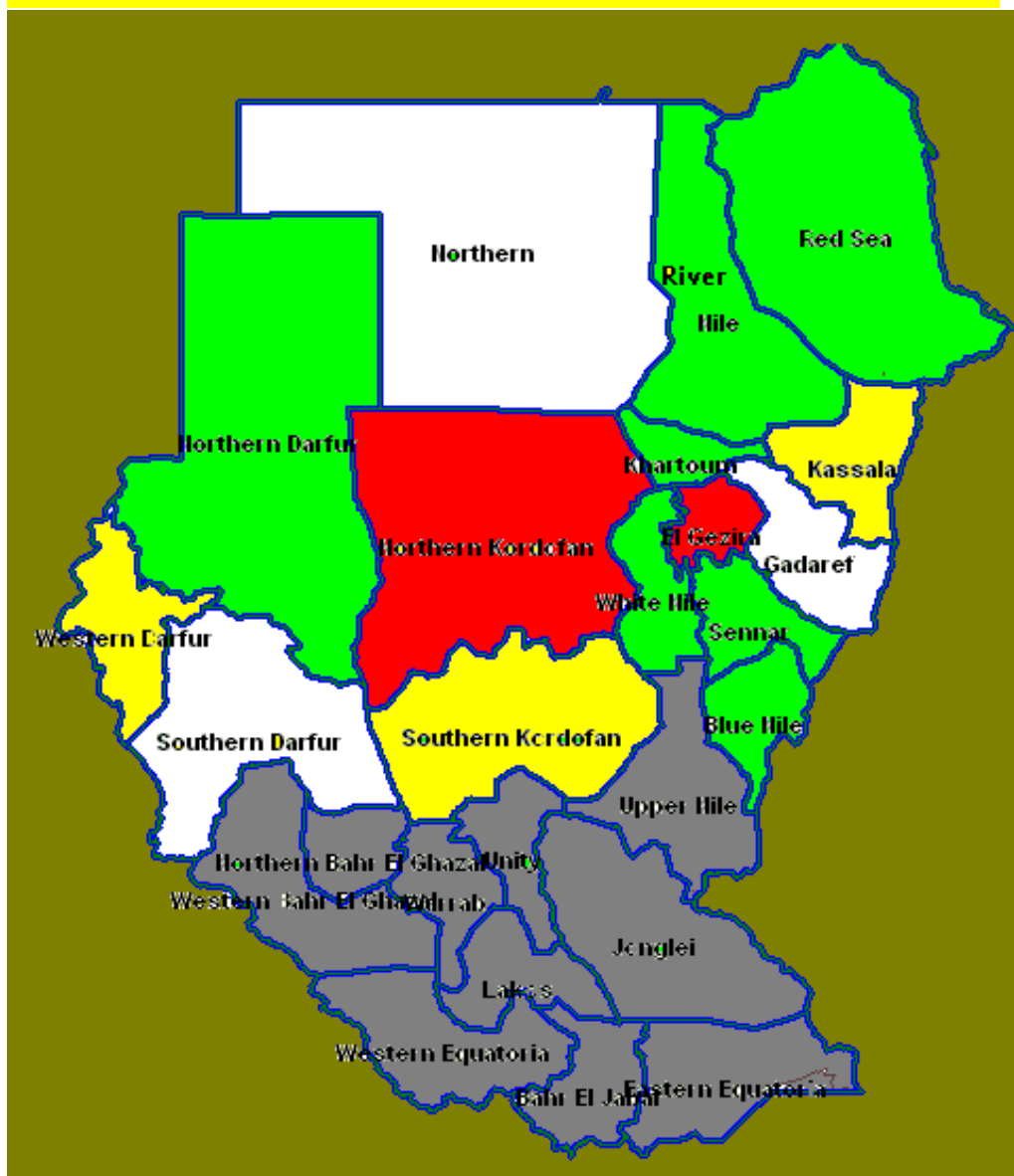


* Up to 6/2/2011

Map 3. Non-polio AFP rate by state, 2010



Map 4. Annualized Non-polio AFP rate by state 2011*



- <1 per 100,000
- 1-1.9 per 100,000
- 2 or more per 100,000
- No cases reported yet!

* Up to 6/2/2011

Table 4. National polio lab performance indicators North Sudan, 2009-2011

Indicator	2009	2010	2011*
AFP cases with samples tested in NPL	420	407	23
Cases with wild poliovirus (imported P1)	5	0	0
Cases with wild poliovirus (imported P3)	0	0	0
Cases with non-polio enterovirus	13%	15%	8%
SL viruses No. & (%) from AFP cases	7 (1.7%)	6 (1.6%)	0
Median days from the time of samples received in the lab to primary culture report or L20B result	12 days	12 days	12 days
Number of samples from the AFP contacts tested in the NPL	488	253	9
Contacts with non-polio enterovirus	8.2%	14%	0%
Sabin like viruses No. & (%) from contacts	4(0.9)	1(0.4%)	0%
NSL like viruses from contacts	3	0	0

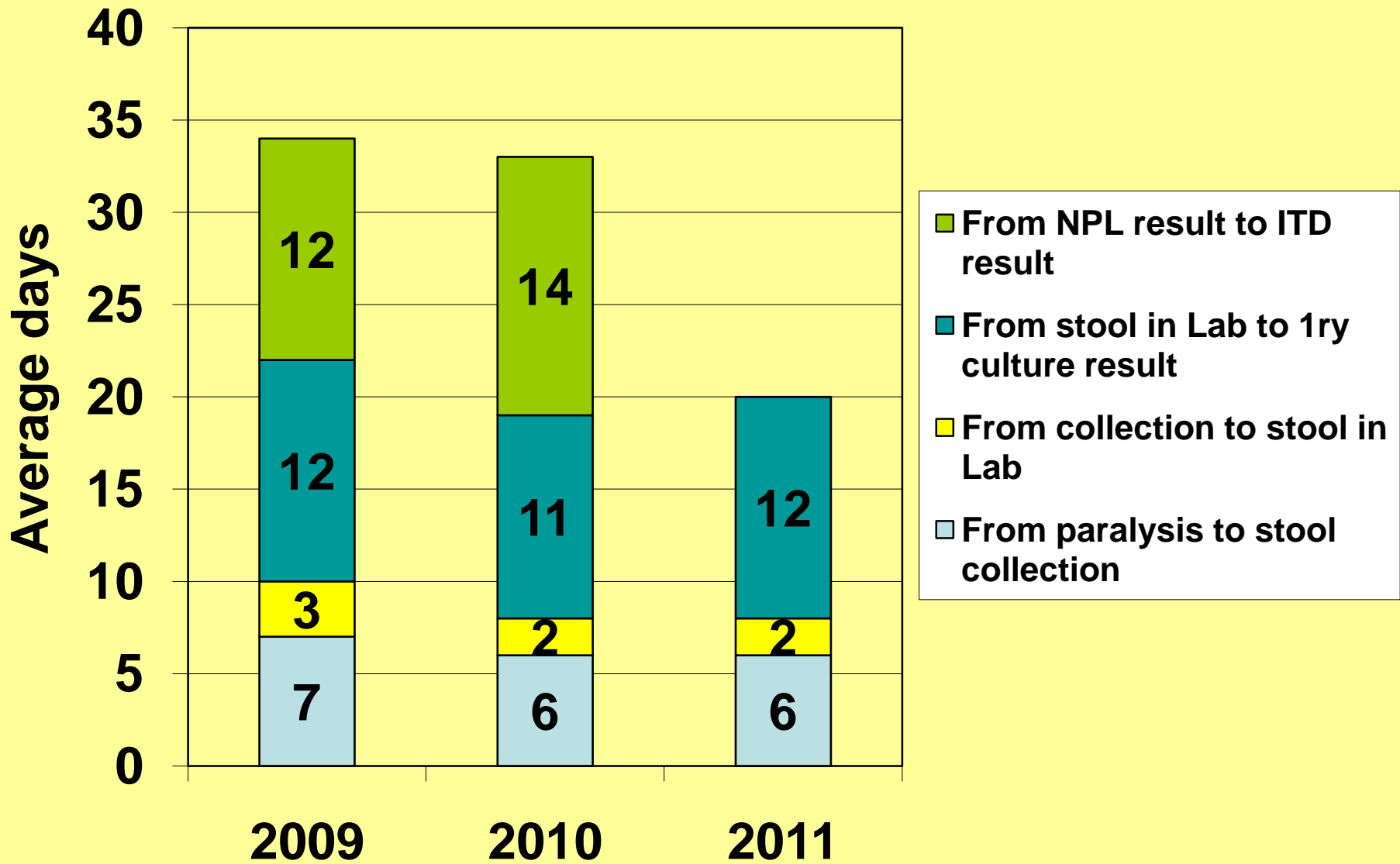
* Up to 6/2/2011

Table 5. Polio lab performance North Sudan, 2009 and 2011

Week of onset	Total AFP Cases with samples	AFP Cases under processes	L20B +ve pending ITD	Negative cases	NPEV positive	% NPEV	Result reported within 14 days	Arrival within 3 days of being collected	Arrival within 3 days of being sent
2009	420	0	0	367	53	13%	91%	78%	98%
2010	407	0	0	345	62	15%	94%	84%	99%
2011*	23	10	0	12	1	8%	100%	96%	100%

* Up to 6/2/2011

Fig. 14: AFP Specimens' timeliness, NPL 2009-2011*



* Up to 6/2/2011